

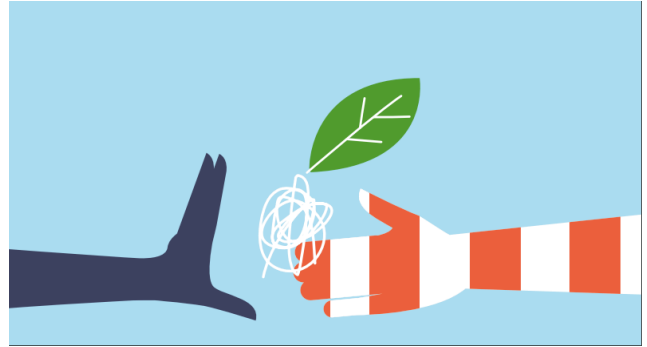
SCHOOL TOURS & ENROLMENTS

**SOUTH
MELB.
PARK**

FOR PROSPECTIVE FAMILIES IN 2026

School tours run from 9.30-10.30am on:

1. Thursday, 8th May
2. Wednesday, 14th May
3. Tuesday, 20th May
4. Wednesday, 28th May
5. Wednesday, 11th June
6. Wednesday, 18th June
7. Tuesday, 22nd July



Bookings Open 11th April. You can book [here](#) or use this QR code:

You can search your address on [Find My School](#), to see if you fall within our school zone

Key dates:

22nd April - Enrolment applications open

- Families 'within the zone' will be provided enrolment forms
- Families 'out of zone' will be able to fill out an application form

25th July - Enrolment applications due

- Families 'within the zone' submit completed enrolment forms
- Families 'out of zone' submit completed application form

28th July - 8th August - Notification of enrolment application outcomes to families

- As per the 'Priority Order of Placement' under the Department's Placement Policy
- School will communicate the formal process by which 'out of zone' families can **appeal** a non-placement.

22nd August - Acceptance of Offer letters and Closing date for written appeals

- Families offered a place, confirm acceptance in writing
- Families wishing to appeal a decision to email school

5th September - Families notified about the outcome of appeals

19th September - Closing date for appeals to the Regional Director

- Where an appeal to the school has been unsuccessful